

**KD** **one**

## DIGITAL COLOR LCD HANDSET VIDEO PHONE



**Model** **UHA-432SG/M**

- Please carefully read this User's Guide (In particular, precautions for safety) before using a product and follow instructions to use a product exactly.
- The company is not responsible for any safety accidents caused by abnormal operation of the product.

**navien** User Manual

# Contents

---

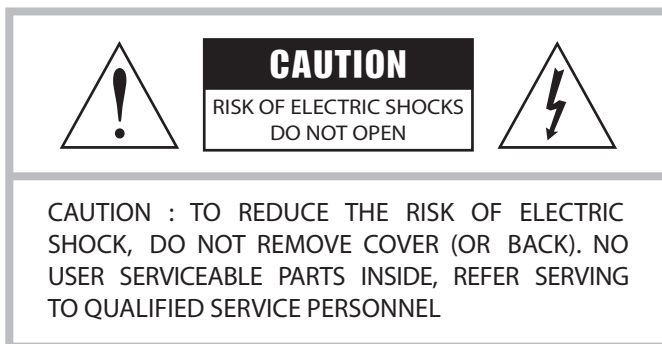
Warning	3
Important safeguards	5
Components	7
Installation	8
Product specifications	9
Operation	10
Wiring diagram	20
Warranty	23

---

# WARNING

---

- To prevent injury, the following safety precaution should be observed during installation, use and servicing of the unit.



This symbol is intended to alert the user to the presence of uninsulated “dangerous voltage” within the product’s enclosure that may be of sufficient magnitude to constitute a risk of electric shock to persons.



This symbol is intended to alert the user to the presence of important operating and maintenance (servicing) instructions in the literature accompanying the appliance.

- Apparatus shall not be exposed to dripping or splashing and that no objects filled with liquids, such as vases, shall be placed on the apparatus.
- To prevent injury this apparatus must be securely attached to the floor/wall in accordance with the installation instructions.
- The disconnect device shall remain readily operable.

Note : Change or modification not expressly approved by the party responsible for compliance could void the user’s authority to operate the equipment.  
This manual is based on the date as shown in the right and specification are subject to change without notice for quality improvement.

---

## For the customers

This equipment has been tested and found to comply with the limits for a Class B digital device, pursuant to Part 15 of the FCC Rules.

These limits are designed to provide reasonable protection against harmful interference in a residential installation. This equipment generates, uses, and can radiate radio frequency energy and, if not installed and used in accordance with the instructions, may cause harmful interference to radio communication.

However, there is no guarantee that interference will not occur in a particular installation. If this equipment does cause harmful interference to radio or television reception, which can be determined by turning equipment on and off, the user is encouraged to try to correct the interference by one or more of the following measures:

- Reorient or relocate the receiving antenna.
- Increase the separation between the equipment and receiver.
- Connect the equipment into an outlet on a circuit different from that to which the receiver is connected.
- Consult the dealer or an experienced radio/TV technician for help.



# Important Safeguards

---

## 1. Read Instructions

All the safety and operating instructions should be read before the unit is operated.

## 2. Retain Instructions

The safety and operating instructions should be retained for future reference.

## 3. Follow Instructions

All operating instructions, maintenance and all warnings should be followed.

## 4. Cleaning

Turn off the power of unit before cleaning. Do not use liquid or aerosol cleaners. Use a dry cloth for the body of unit.

## 5. Attachments

Do not use attachments not recommended by the unit product manufacturer, as they may be hazardous or cause damage.

## 6. Heat and Moisture

Do not expose this unit direct sunlight and rain for reliable operation.

## 7. Installation

Do not install this unit on an unstable place (hot, cold, humid or excessive dust). Use only with a mounting accessory recommended by the manufacturer or sold with the unit.

Installing this unit should follow instructions of manufacturer and qualified service personnel.

## 8. Ventilation

Slot and opening in the cabinet are provided for ventilation to ensure reliable operation of the unit and to protect it from overheating.

These openings must not be blocked or covered. Never place your unit on a bed, sofa, rug, or similar surface or on near a radiator or heat register.

This unit should not be placed in a built-in installation such as a bookcase or rack unless proper ventilation is provided.

## 9. Power Sources

This unit should be operated only from the type of power source indicated on the label. If you are not sure of the type of power supply to your home, consult your appliance dealer or local power company.

To operate the unit by battery or other power source, consult the operating instructions.

---

## 10. Grounding and Polarization

This unit may be equipped with either a polarized 2-wire AC line plug (a plug having one blade wider than the other) or a 3-wire grounding type plug, a plug having a third (grounding) pin. The 2-wire polarized plug will fit into the power outlet only one way. This is a safety feature. If you are unable to insert the plug fully into the outlet, try reversing the plug. If the plug still fails to fit, contact your electrician to replace your outlet.

Do not defeat the safety purpose of the polarized plug.

## 11. Overloading

When using this product, do not overload the power outlets or extension cords as this could cause fire or electric shock.

## 12. Accessories

Do not place this unit on an unstable cart, stand, tripod, bracket or table. If the unit falls, it could cause injury or damage to the system.

## 13. Object and Liquids

Never push objects of any kind into this unit through the openings.

Never spill liquid of any kind on the unit.

## 14. Servicing

Do not attempt to service this unit yourself as opening or removing covers may expose you to dangerous voltage or other hazards. Refer all servicing to qualified service personnel.

## 15. Power Line

The system should not be located near power lines or electric light or power circuits.

## 16. Damage Requiring Service

Unplug this unit from the wall outlet and refer to servicing to a qualified service technician if any of the following occur.

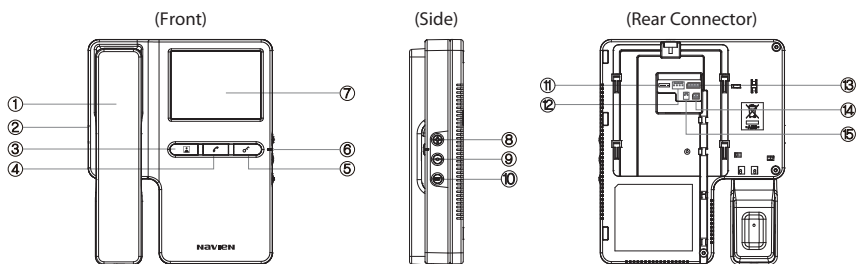
- a. If the power supply cord or plug is damaged.
- b. If any liquid has been spilled into objects have fallen in the unit.
- c. If the unit has been exposed to rain or water.
- d. If the unit has been dropped or otherwise damaged.
- e. If the equipment exhibits a distinct change in performance.

## 17. Replacement Part

When replacement parts are required, use replacement parts specified by the manufacturer.

# COMPONENTS

## ■ Main body



① Handset	⑥ Power Indicator LED	⑪ Connection Terminal for S/W Upgrade
② Power On/OFF	⑦ LCD Screen	⑫ Connection Terminal for door Cam #1
③ Monitoring Button	⑧ +(UP) Button	⑬ Connection Terminal for door Cam #2
④ Intercom Button	⑨ -(DOWN) Button	⑭ Connection Terminal for Intercom
⑤ Door Open Button	⑩ Set Button	⑮ Connection Terminal for Interphone Power

## ■ Mounting Hardware & Cable

 3 x 8mm (1Ea)

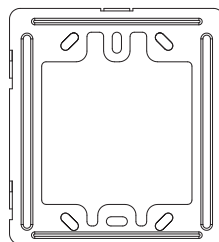
 4 x 30mm (2Ea)

 (1ea)

 (1ea)

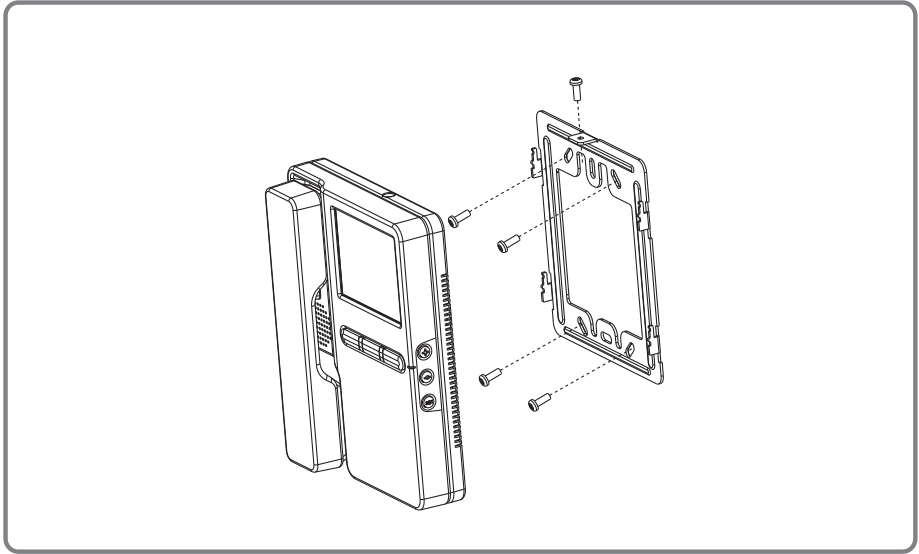
 (1ea)

 (1ea)



Fixing Bracket

# INSTALLATION

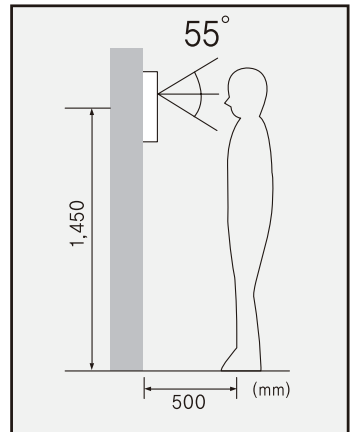


## ■ Standard height of video phone

1. After determining the mounting locations for both the outside camera and inside monitor.
2. At the selected monitor mounting location, 1,450mm is suggested from the bottom.

<Caution>

Install the monitor away from the heat, moisture and direct sun rays.





# PRODUCT SPECIFICATIONS

## ■ Specifications

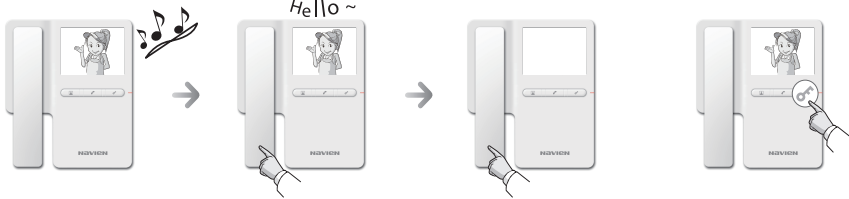
DIV.		Specifications
Power Source		AC 100~240(50/60Hz)
Wiring		Doorphone : 4 wires in polarity (POWER, VOICE, VIDEO, GND) Intercom : 2 wires in polarity (VOICE, GND) Interphone : 4 wires in polarity (POWER, GND, VOICE, GND)
System Composition		2 Door phones + 2 Monitors + 1 Interphone
Distance		- DOOR : TIV 0.5(28M), TIV 0.65(50M), TIV 0.8(70M) (Up to the last videophone) - INTERPHONE : TIV 0.5(20M)
Video Memory (Option)	Still Cut	256 Cuts
	Movie	5f/s, 5sec, 32Clips
LCD Screen	LCD	4" Color TFT LCD
	Video input	1Vp-p/75Ω, Composite NTSC/PAL(Color)
Environmental Circumstance	Temp.	0°C ~ 40°C
	Humidity	Less than 90% (Relative humidity)
Dimensions	Size	170(W) × 206(D) × 35(T) mm
	Weight	UHA-432SG : 750 g UHA-432SGM : 770 g
Mounting		Wall surface mounted

# OPERATION

## 1. Talk

### ■ When a visitor pushes a Call Button

When a visitor pushes the Call Button on the door-phone at the front door, the call is transferred to the Videophone.



Call signal is ringing on the Videophone, while Power indicator LED is flickering, and the image of the visitor appears on the screen.  
(Approximately 30 seconds)

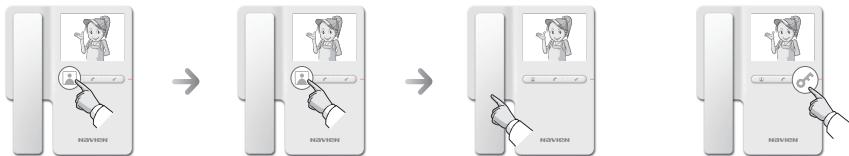
When Hang-off the handset, the conversation is start with the Visitor (Max. 1 minute)

If you Hang-on the Hand-set while talking with the visitor or the time limit of 1 minute is reached, the screen goes blank and the conversation ends.

If you push the "Door Open" Button, the relevant door opens and the conversation ends.

※ "DOOR#1" or "DOOR#2" appears at the top of the screen.

### ■ When using the Monitoring function



If you push the "Monitoring" Button, pictures captured by the door-phone at the front door will appear on the screen.  
(Max. 1 minute)

If two door-phones are installed, door-phone #2 can also be monitored by pushing the "Monitoring" Button one more time.

If you Hang-off the handset while using the monitoring function, talking is enabled through the door-phone that is currently installed.

"Door Open" Button during monitoring, the relevant door opens and monitoring ends.

※ "DOOR#1" or "DOOR#2" appears at the top of the screen.

## ■ Intercommunication between videophones (when they are connected)



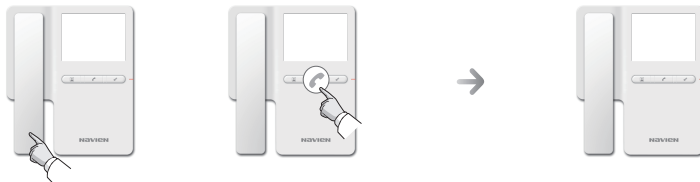
When a call signal comes from another videophone, Power indicator LED is flickering and home call melody ringing. (Approximately 30 seconds)

When Hang-off the handset, talking starts.

If you Hang-on the Hand-set while talking or the time limit of 1 minute is reached, the screen goes blank and the conversation ends.

※ 'INTERCOM' appears at the top of the screen

## ■ Call signaling to another videophone



When Hang-off the handset and push the Intercom button the conversation is start with another videophone.

If you Hang-on the Hand-set while talking or the time limit 1.5 minutes the screen goes blank and the conversation ends. It is not depends on the other Videophone's status.

※ 'INTERCOM' appears at the top of the screen.

---

## 2. Storing and playing Images

### ■ Storing images of a visitor (Video memory equipped model)

- Storing of images is done automatically during call signaling to the door-phone, depending on how the user has set up STILL/VIDEO storing in the user menu.
- If there's no storage space, the oldest image will be deleted so that a new image can be stored . (VIDEO : 32CLIP, STILL : 256CUT)
- While the Handset is Hang-Off, storing images are not available when door phone is calling.  
(This is a communication status between Video phone and door-phone.)

### ■ Playing Images (Video memory equipped model)

- If VMM module is installed and there are stored images, push the "+" or "-" key on the right and enter 'PLAY' mode. By pushing the "+" and "-" keys, the stored images can be played in order.
- If VMM module is installed and there's no stored image, push the "+" or "-" key on the right and "NO Image" appears.
- If image storage type is set up as STILL, only STILL images are stored and played if set up as VIDEO, only video images are stored and played.
- If you push SET button or about 10 Second passes, playing ends.

---

### 3. Menu setting functions

#### ■ How to control the call signal bell

- You can control the call signal bell volume the "+" or "-" switch located on the side of the product when in-bound or out-bound calling.
- Using "+" or "-" switch, set the volume (1~3) and push the "SET" Button for confirm.

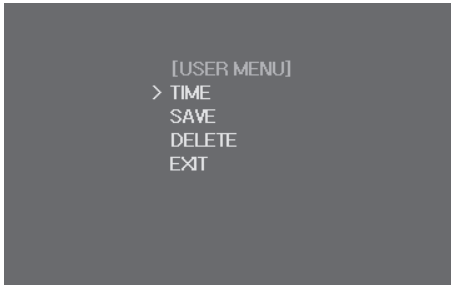
#### ■ Setting the picture quality

- You can control the picture quality on the screen.
  - When the screen in ON, push the "SET" Button and can set the Brightness. You can see an image of the screen Brightness set mode.
  - Using "+" or "-" button, you can set the Brightness(0~8, up to 9 phases). After adjusted screen brightness, press "SET" Button and enter the Contrast set mode.
  - Using "+" or "-" button, you can set the Contrast (0~8, up to 9 phases). After adjusted screen contrast, press "SET" Button and enter the Color set mode.
  - Using "+" or "-" button, you can set the Color (0~8, up to 9 phases). After adjusted screen contrast, press "SET" Button and setting is complete and the indication disappears from the screen.
- ※ [BRIGHT] : Screen Brightness, [CONTRAST] : Screen Contrast, [COLOR] : Screen Color

---

## ■ USER mode(Video memory equipped model)

- USER mode is for the Video Memory module(VMM).
- Enter "USER" mode by pressing the "SET" button in a standby state after power is on.



- If VMM is not installed on your device, when you press the "SET" button, ERROR TONE will ring.
- USER mode ends automatically and standby mode is on when about 30sec passes without button input.
- When you are in USER mode, you will not receive any door-phone, extension or interphone call.

EXIT : Ending setup

TIME : VMM Time setting (For time information on the recorded pictures and videos)

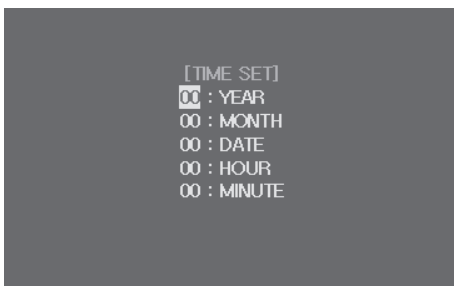
SAVE : STILL/VIDEO

DELETE : Delete all STILL or VIDEO files

- ※ When power is OFF → ON in the middle of changing the configuration on USER mode, the modification may fail to be applied.

## ■ Setting the time (Video memory equipped model)

- This setting is for the displaying time on the stored Video(Still/Video)
- In the USER mode, When the "+" or "-" button is pushed from the time set screen, "TIME" menu screen appears.



- YEAR setting : Using "+", "-" button for setting and press the "SET" button for next Month setting mode.
- Month setting : Using "+", "-" button for setting and press the "SET" button for next Date setting mode.
- Date setting : Using "+", "-" button for setting and press the "SET" button for next Hour setting mode.
- Hour setting : Using "+", "-" button for setting and press the "SET" button for next Minute setting mode.
- Minute setting : Using "+", "-" button for setting and press the "SET" button for end of set menu. When minute setting is complete, the User menu screen appears again.

※ If time set mode ends without completion of minute setting, the data being set up may not be stored.

## ■ Video storage type set up mode(Video memory equipped model)

- Video storage type setup mode
- If you push "+" or "-" button from Main menu, entered the "SAVE" menu screen appears (The present storage type appears under selection.)



- Select either VIDEO or STILL as storage type using "+" or "-" (VIDEO : video(5 seconds) storage / STILL : still image storage)
- After select save type, push the "SET" Button, selected type will display on the screen.
- Using "UP", "DOWN" and press "EXIT" and press "SET" for go back to the USER mode menu.

※ When the Type was set for STILL, storage and play will in STILL type only.  
When the Type was set for VIDEO, storage and play will in VIDEO type only.

## ■ Video storage type set up mode(Video memory equipped model)

- Delete all stored images
- If you push "+" or "-" button from Main menu, entered the "DELETE" menu.
- Push the "SET" button, "ALL DELETE"



- Select either YES or NO using the "+" and "-" buttons and push "SET" (YES : delete all images / NO : Do not delete images)
- User menu screen appears again after the operation is completed.



## ■ Manager Mode



\* Manager mode is the product setting mode that allows a installer to conquer the device environment(setting door-phone number and the type of door-phone camera) needed for operation.

- Manager mode ends automatically and standby mode is on when about 1 minute passes without button input.

\* When you are in Manager mode, you will not receive any door-phone, extension or interphone call.

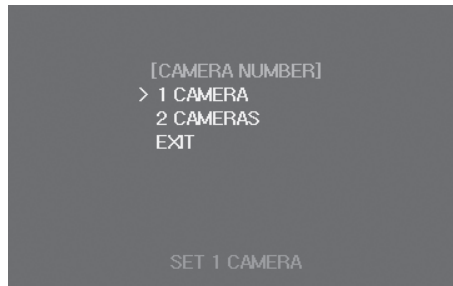
- Enter "MANAGER" mode by pressing and holding the Door Open button for more than 3 seconds in a standby state after power is on.

※ When power is OFF → ON in the middle of changing the configuration on Manager mode, the modification may fail to be applied.

---

## ■ Setting CAMERA Number

- \* This is the mode that allows you to set the number of door-phones in line with the Videophone.
- \* Set up as Door-phone 1 by default.
- Select [CAMERA NUM] from the [MANAGER] MENU using the "UP" and "DOWN" buttons . If you push the "SET" button, [CAMERA NUM] appears, which indicates the current setup.
- "Select the number of door-phones to be connected with videophone using the "UP" and "DOWN" buttons at the bottom, and then push the "SET" button.
- You can see what was set in "CAMERA NUMBER" on the screen.
- If you push the "EXIT", using "UP", "DOWN", the [MANAGER] MENU screen will appear again.



---

## ■ Setting CAMERA TYPE

\* This is a mode that allows you to set the type of the door-phone camera to be connected with the videophone.

\* Set up as PAL by default.

- Select [CAMERA TYPE] from [MANAGER] MENU using the "UP" and "DOWN" buttons, and then

if you push the "SET" button, [CAMERA TYPE] menu appears, which indicates current setup

- Select the type of the door-phone camera to be connected with the videophone using the "UP" and "DOWN" buttons at the bottom and then push the 'SET' button

- You can see what was set in "CAMERA TYPE" on the screen.

- If you push the "EXIT", using "UP", "DOWN", the [MANAGER] MENU screen will appear again.



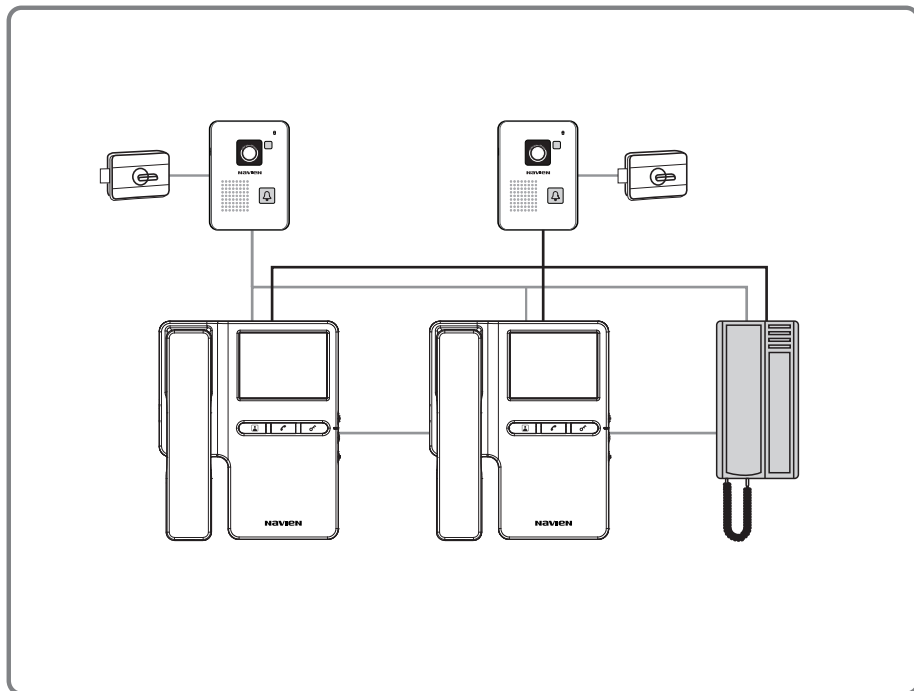
※ Caution: The camera must be connected that matches the configuration setup.

If you fail to do this, (e.g. connecting PAL camera while set up as NTSC) the screen image may not appear correctly. Then, the screen is returned to the normal state when the power is OFF → ON

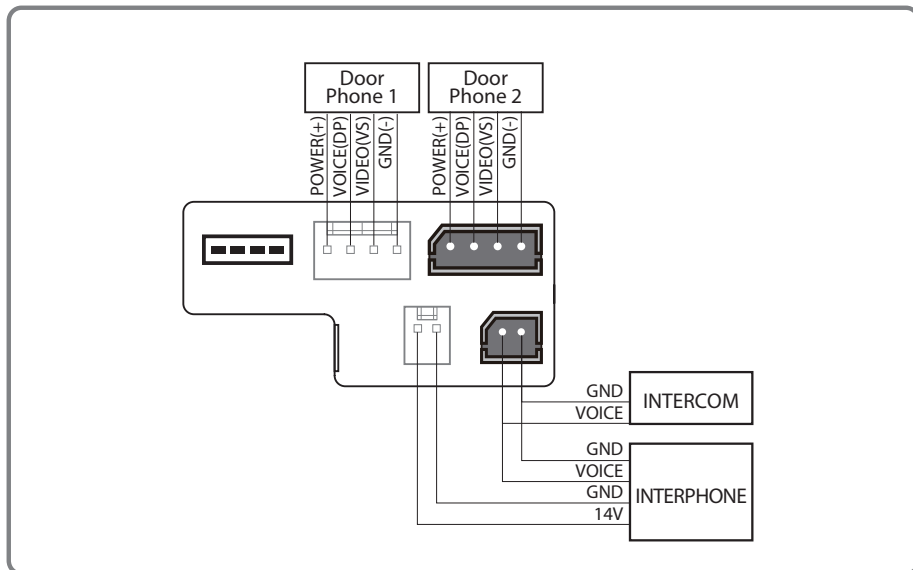
# WIRING DIAGRAM

---

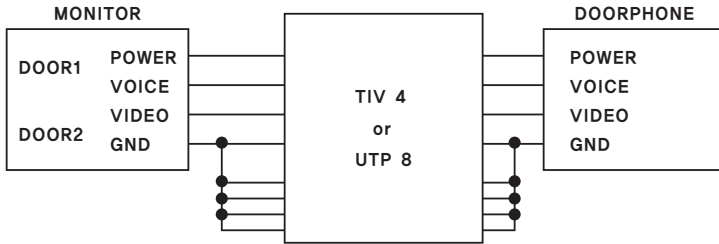
## ■ System Diagram



## ■ Wiring Diagram (Rear Terminal Board)

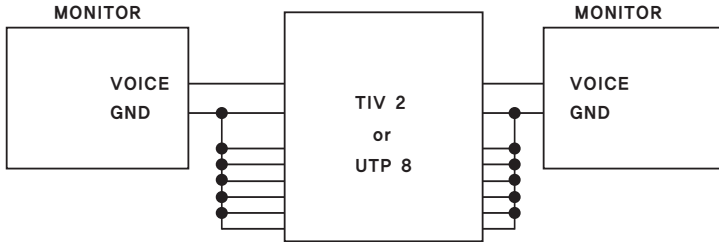


### ■ Doorphone Wiring



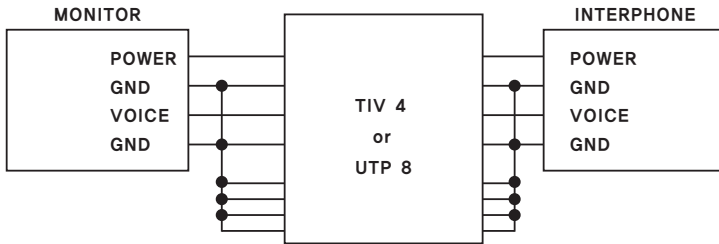
If UTP CABLE[CAT.5] is used, use 5 lines for GND line

### ■ Intercom Wiring



If UTP CABLE[CAT.5] is used, use 7 lines for GND line

### ■ Interphone Wiring



If UTP CABLE[CAT.5] is used, use 6 lines for GND line



Note :

Arbitrarily installed additional monitors may lower the quality of video and voice transmission.

# WARRANTY

---

Products are supplied with two(2) years return to base warranty. From the date of purchase. We will repair or replace the defective item with a new or factory rebuilt replacement.

## Condition

- 1.This warranty applies to the original purchaser only.
2. All warranty will be invalid if unauthorized repair or modification are made to the unit or in any case of accident, misuse, damage cause by improper installation and altered serial numbers.
3. The liability of is limited to the cost of repair/replacement of the unit under warranty.
4. If you need a warranty service, you should send the product to our customer service Dep't or dealer office. The product in all cases must be accompanied by the following items:  
Your name, address, telephone number, the serial number, copy of your sales receipt showing the purchase date.

The Model Number is on the box and front of the manual. The Serial Number is on the bottom of the unit. Record the Model and Serial Numbers in the spaces provided below.

Refer to these numbers for warranty service.

Model No.

Serial No.

\_\_\_\_\_

\_\_\_\_\_



**KD one**

4F, KOAMI Bldg., 22, Gukhoe-daero 76-gil, Yeongdeungpo-gu, Seoul,  
150-870, Korea/KD One global business Dept.  
Website : [www.kdone.co.kr](http://www.kdone.co.kr)